



Class A Office Ground Ready For Development

K-10 Highway & Ridgeview Road (SEQ), Olathe, KS



SALE PRICE: \$3,700,000 | 22.97 ACRES

DEMOGRAPHICS

| | 1 mile | 3 miles | 5 miles |
|-----------------------|-----------|-----------|-----------|
| Estimated Population | 151 | 55,230 | 183,226 |
| Avg. Household Income | \$130,953 | \$109,763 | \$108,495 |

- 12.6 acres of ground for development on 22.97 acres
- Property zoned BP
- Within walking distance of Genesis Health Club
- Located near Garmin Olathe Soccer Complex's amenities
- Direct visibility to K-10 and close proximity to I-435
- In one of the fastest growing ares of the KC Metro
- [Click Here to view more Drone Photos](#)

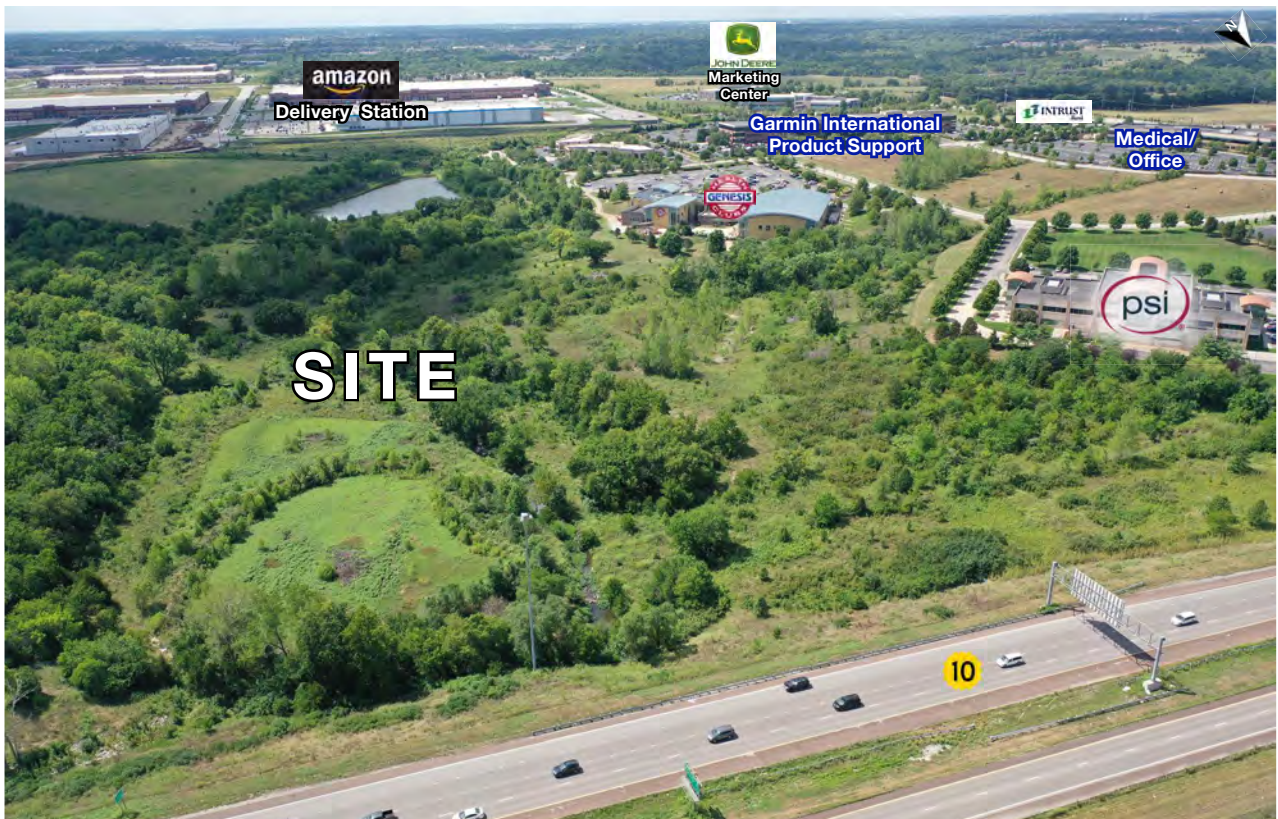
 [CLICK HERE TO VIEW MORE LISTING INFORMATION](#)

For More Information Contact: *Exclusive Agent*
DANIEL BROCATO | 816.412.7303 | dbrocato@blockandco.com



All information furnished regarding property for sale or lease is from sources deemed reliable, but no warranty or representation is made as to the accuracy thereof and the same is subject to errors, omissions, changes of prices, rental or other conditions, prior sale or lease or withdrawal without notice.

DRONE PHOTOS



DRONE PHOTOS

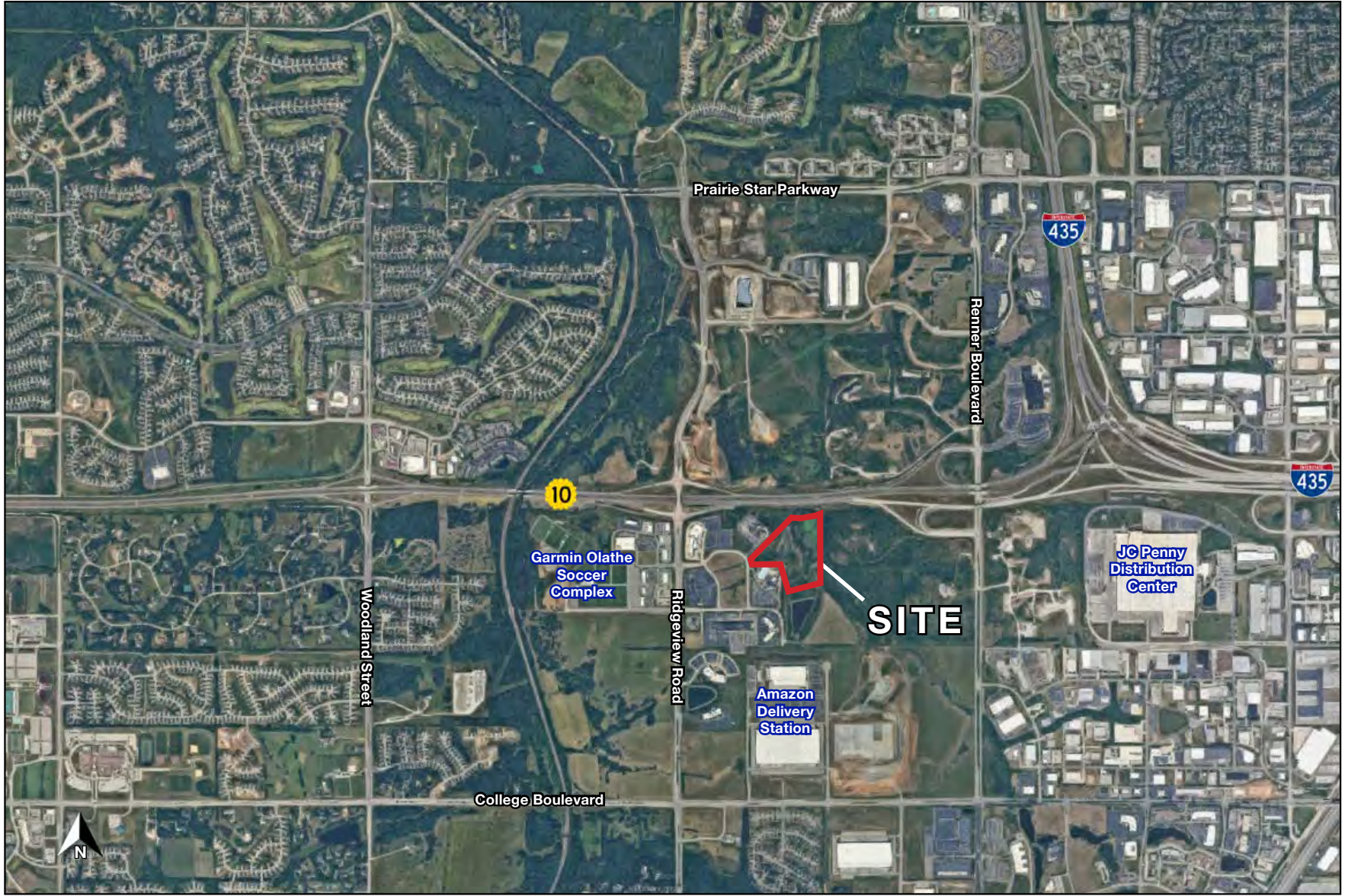




Class A Office Ground Ready For Development

K-10 Highway & Ridgeview Road (SEQ), Olathe, KS

AERIAL





Class A Office Ground Ready For Development

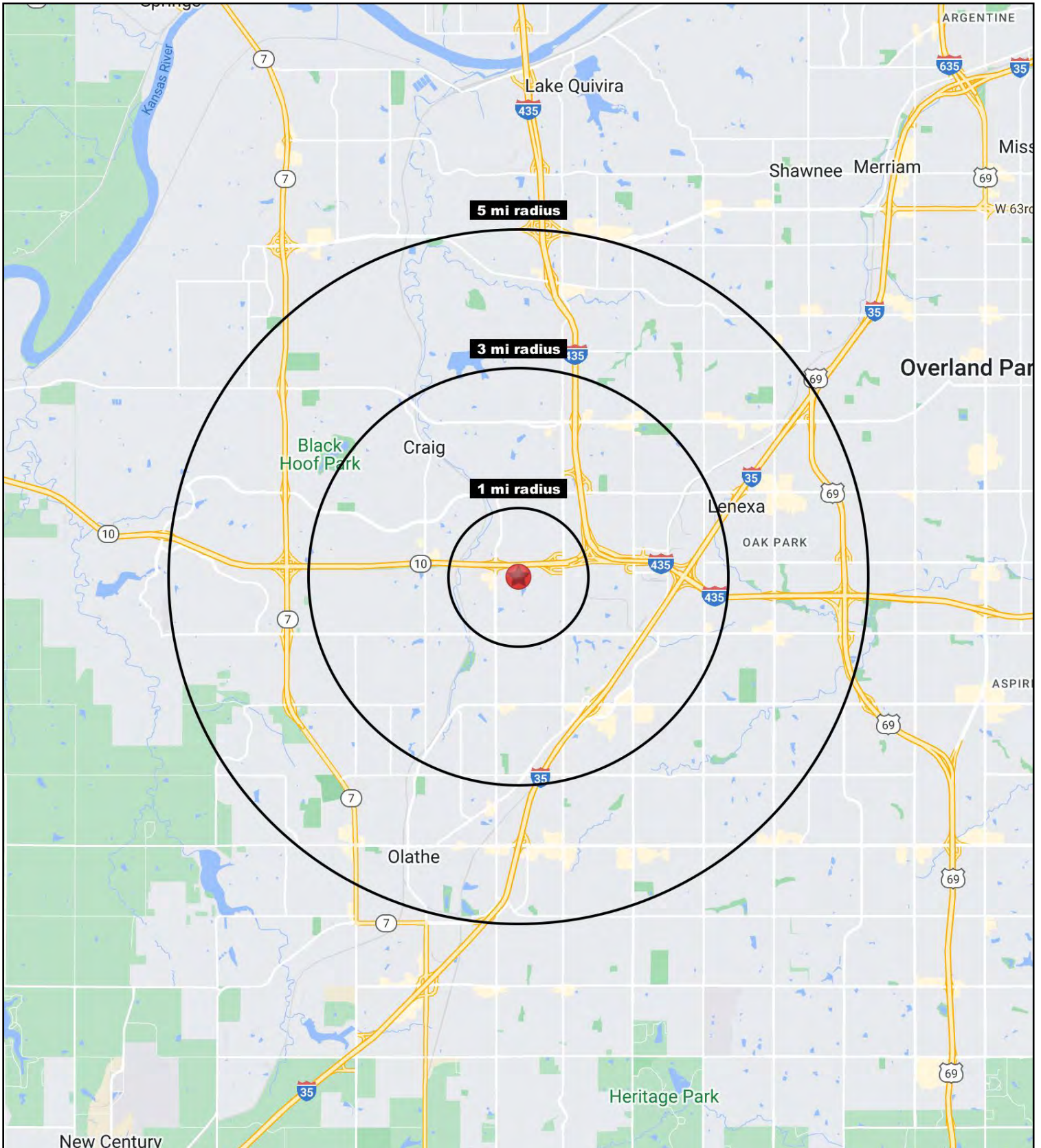
K-10 Highway & Ridgeview Road (SEQ), Olathe, KS

SITE PLAN



Class A Office Ground Ready For Development

K-10 Highway & Ridgeview Road (SEQ), Olathe, KS





Class A Office Ground Ready For Development

K-10 Highway & Ridgeview Road (SEQ), Olathe, KS

| K-10 Highway & Ridgeview Road (SEQ) | 1 mi radius | 3 mi radius | 5 mi radius |
|---|-------------|-------------|-------------|
| Olathe, KS 66061 | | | |
| Population | | | |
| 2022 Estimated Population | 151 | 55,230 | 183,226 |
| 2027 Projected Population | 167 | 59,132 | 192,030 |
| 2020 Census Population | 145 | 55,016 | 181,870 |
| 2010 Census Population | 113 | 46,762 | 160,895 |
| Projected Annual Growth 2022 to 2027 | 2.1% | 1.4% | 1.0% |
| Historical Annual Growth 2010 to 2022 | 2.8% | 1.5% | 1.2% |
| 2022 Median Age | 40.7 | 36.2 | 37.0 |
| Households | | | |
| 2022 Estimated Households | 65 | 22,474 | 72,635 |
| 2027 Projected Households | 73 | 24,461 | 77,124 |
| 2020 Census Households | 62 | 22,366 | 72,043 |
| 2010 Census Households | 47 | 18,428 | 62,804 |
| Projected Annual Growth 2022 to 2027 | 2.5% | 1.8% | 1.2% |
| Historical Annual Growth 2010 to 2022 | 3.2% | 1.8% | 1.3% |
| Race and Ethnicity | | | |
| 2022 Estimated White | 83.5% | 75.6% | 74.8% |
| 2022 Estimated Black or African American | 4.5% | 6.4% | 6.4% |
| 2022 Estimated Asian or Pacific Islander | 4.3% | 4.7% | 5.0% |
| 2022 Estimated American Indian or Native Alaskan | 0.3% | 0.5% | 0.5% |
| 2022 Estimated Other Races | 7.3% | 12.8% | 13.4% |
| 2022 Estimated Hispanic | 5.3% | 10.5% | 11.1% |
| Income | | | |
| 2022 Estimated Average Household Income | \$130,953 | \$109,763 | \$108,495 |
| 2022 Estimated Median Household Income | \$113,017 | \$97,021 | \$94,715 |
| 2022 Estimated Per Capita Income | \$56,275 | \$44,753 | \$43,115 |
| Education (Age 25+) | | | |
| 2022 Estimated Elementary (Grade Level 0 to 8) | 0.1% | 2.0% | 2.0% |
| 2022 Estimated Some High School (Grade Level 9 to 11) | 0.7% | 2.2% | 3.0% |
| 2022 Estimated High School Graduate | 10.6% | 15.6% | 15.9% |
| 2022 Estimated Some College | 20.7% | 18.1% | 19.7% |
| 2022 Estimated Associates Degree Only | 5.1% | 9.0% | 7.8% |
| 2022 Estimated Bachelors Degree Only | 41.3% | 33.9% | 33.3% |
| 2022 Estimated Graduate Degree | 21.4% | 19.1% | 18.3% |
| Business | | | |
| 2022 Estimated Total Businesses | 129 | 2,528 | 7,219 |
| 2022 Estimated Total Employees | 2,696 | 54,552 | 125,795 |
| 2022 Estimated Employee Population per Business | 20.9 | 21.6 | 17.4 |
| 2022 Estimated Residential Population per Business | 1.2 | 21.9 | 25.4 |

©2022, Sites USA, Chandler, Arizona, 480-491-1112 Demographic Source: Applied Geographic Solutions 6/2022, TIGER Geography - RS1

